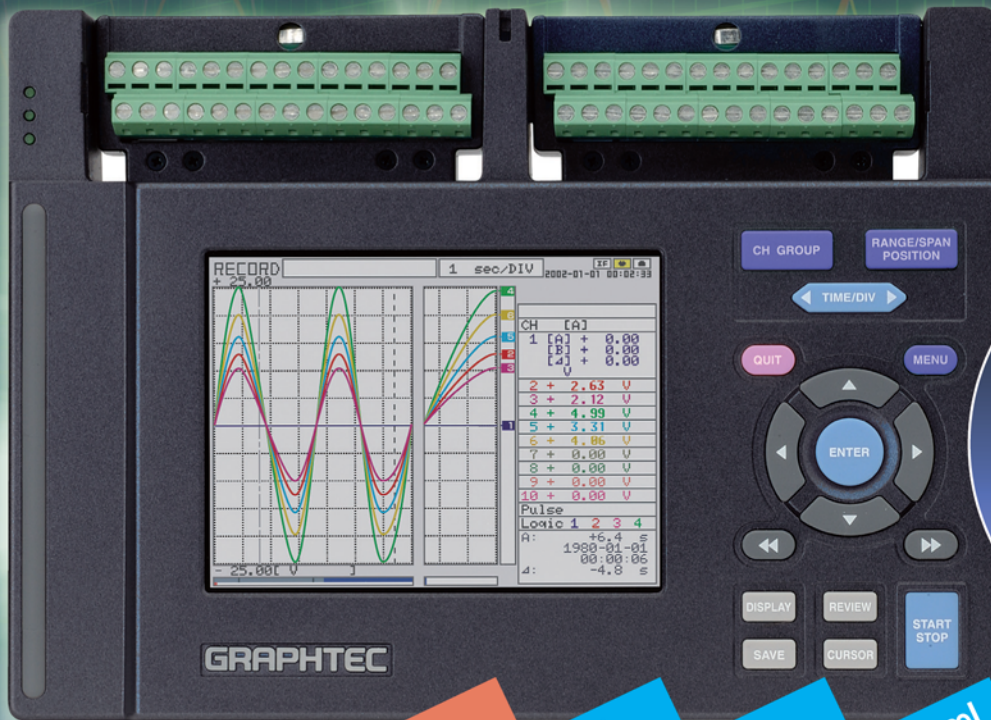


CORE SYSTEM

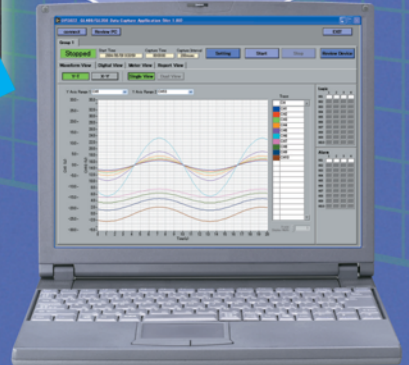
World Standard Data Acquisition System

NEW

Wireless LOGGER WS450



Multi-function
Voltage/Temperature/Pulse
(Electric-Power, Rotational
Speed, and Flow-Quantity)



All channel isolated inputs

Hygrometry (B-530 humidity sensor)

Battery charge is always possible.

Direct transmission and Display by Excel

Easy operability



Easy operation with
cursor keys and buttons

One-touch detachable input terminal units



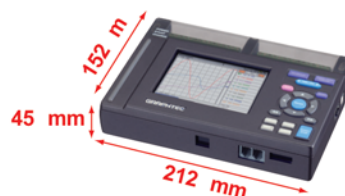
- Easy to install and remove
- Can be installed in the main unit in two ways
- Choice of three types: 10-ch, 20-ch, and 50-ch

Easy P C connection

Data transfer in real time



A5 size



An A5-size model with
isolated inputs is available
at last

코아시스템에서 공급하는 WS450 시리즈는 다양한 측정환경에 자유로움을 더한 최고의 Data Logger 입니다. 기존의 뛰어난 기능에 대용량 메모리 및 무선통신 기능을 내장하여 신호를 측정하는 곳의 환경이 어떠하든지 사용자는 자유롭게 손쉽게 Data의 획득이 가능합니다. 생산라인이나 외부의 실험장소 또는 측정환경이 열악한 어느곳에서도 이제는 무선으로 최대 100M 까지 장비와 PC간의 Data 수집 및 통신이 가능합니다. 더불어 WS450은 기본 S/W 에서 신호기록시 Direct Excel Transfer 기능이 연동되어 측정과 동시에 실시간으로 Excel 에서 Data 및 신호그래프를 동시에 기록하므로 사용자는 측정후의 불필요한 Data의 재 취합등의 부가적인 시간 낭비를 획기적으로 줄이실수 있습니다.(유선랜, 무선랜, USB2.0, FLASH Acquisition Memory 를 한장비에서 구현한 최고의 장비입니다)

Main Unit Specifications

Item		GL450
Number of analog input terminal units mountable		2
Analog input terminal unit input method		Scanning, all channels isolated
Number of input channels		10 channels/unit, 20 channels/unit, 50 channels/unit (manufactured after receipt of order)
Analog voltage input		20, 50, 100, 200, 500 mV; 1, 2, 5, 10, 20, 50 V; 1-5 V /f.s.
Temperature input		Thermocouples: K, J, E, T, R, S, B, N, W (WRe5-26) Resistance temperature detector: Pt100, JPt100
Humidity input		0 to 100% (Voltage 0V to 1V scaling conversion) *B-530
Filter		On, Off (software filter)
A/D converter		16 bits
Sampling interval		100, 200, 500 ms; 1, 2, 5, 10, 20, 30 s; 1, 2, 5, 10, 20, 30 min; 1 h
Trigger functions	Types	Start: Data capture starts when a trigger is generated Stop: Data capture stops when a trigger is generated
	Conditions	Start: Off, Level, Alarm, External, Date Stop: Off, Level, Alarm, External, Date, Time
Alarm functions	Types	Analog, Logic, Pulse AND, Pulse OR
	Conditions	Analog: H, L, Window In, Window Out Logic: 4-ch pattern Pulse: H, L, Window In, Window Out
Pulse input*1	Number of channels	1 ch
	Ranges	RPM mode: 500 rpm, 5, 50, 500 krpm/f.s. (max. 50k/s) Count mode: 50, 500 kC, 5, 50, 500 MC/f.s. (max. 50k/sampling interval) Inst. mode: 50, 500 kC, 5, 50MC/f.s. (max. 50k/sampling interval)
External trigger input*1	Number of channels	1 ch
Logic input*1	Number of channels	4 ch
Alarm output	Number of channels	4 ch
	Output format	Open collector output (100 k Ω pull-up resistance)
	Output conditions	Level judgment, window judgment, logic pattern judgment, pulse judgment
Internal memory	Memory capacity	4 MB (2 Mwords)
Memory device	PCMCIA card slot	Type 2
PC interfaces		USB (Ver. 2.0), Ethernet (10 Base-T, 100 Base-TX)
Monitor	Size	4.7-inch STN color LCD
	Displayed items	Waveforms + digital values, waveforms only, digital values only, digital values + calculated values
	Functions	Waveform expansion/compression, Scaling, Calculation, Search
Operating environment	Temperature	0 to 40°C
	Humidity	30 to 80% RH (non-condensing)
Power supply		AC adapter (100 to 240 VAC, 50/60 Hz)
		DC input (12 to 24 VDC), Battery pack*2
External dimensions (W x D x H, approx.)		212 x 152 x 45 mm
Weight (approx.)		770 g*3

*1 Max. input voltage: 24 V Input threshold voltage: approx. +2.5V Hysteresis: approx. 1V (+2 to +3V)

*2 Option

*3 Excluding the battery and AC adapter; including one 10-channel input terminal unit

Software Functions (provided as standard)

Item	Description
Compatible operating system	Windows 2000/XP
Functions	Main unit control, realtime data capture, data conversion
Main unit settings	Input settings, memory settings, alarm settings, trigger settings
Captured data	Realtime data, Memory data, PC card data
Displayed items	Analog waveforms, logic waveforms, pulse waveforms, digital values
Display modes	Digital values, waveform, meter
Monitor function	When an alarm is generated, email is sent to the specified address
Report function	File functions

Standard Configuration

Model name	Standard configuration
WS450	IOTU Input Terminal, Battery Pack 1 Gbyte Acq Memory, K-Type 열전대(2M/CH) Wireless Lan Kit, Analysis Software (OPS022) Hard Carrying Case, WS450 Hard Support

Options

Option name	Option number
10-channel input terminal unit	10TU
20-channel input terminal unit	20TU
50-channel input terminal unit*1	50TU
10-channel M3 screw terminal stand	M3TU
Battery pack 7.4V / 2200mAh	B-517
64 MB Compact Flash	—
256 MB Compact Flash	
Compact Flash adapter	
Logic alarm cable, bare tips (2 m)	B-513
DC drive cable, bare tips (2 m)	B-514
Cable to connect two main units together, 1-m length (used for synchronized sampling when PC measurement is performed)	B-515
Humidity sensor	B-530
Condition : -25 to +80°C, 0 to 100%RH	
Dimensions : 14mm x 80mm *without cable , 3m length	

*1 Manufactured after receipt of order. Used outside the main unit
Note: Compact Flash cards and adapters are commercially available



To ensure correct and safe use:

- Read your User's Manual before using the product, and operate it correctly in accordance with the procedures described.
- To prevent malfunctions or electrical shock due to current leakage, ensure that the product has a good protective ground, and ensure that the supply voltage conforms to the product power rating.

Brand names and product names listed in this brochure are the trademarks or registered trademarks of their respective owners.
Specifications are subject to change without notice.

코아시스템

H.P +82 (011) 507-6015
TEL. +82 (054) 442-6701
FAX +82 (054) 442-6702
E_mail : core@thecore.co.kr
Web : www.thecore.co.kr

R100 Printed in Japan
on 100% Recycled Paper



Fujisawa Plant

RGL1040510SU Printed in Japan